

THE INDUSTRY'S #1 SECOND SOURCE FOR ASML REPAIR & REBUILD SERVICES.

EOTS NEWSLETTER

It's no secret that ASML 2500,5000,5500 tools have far exceeded their expected lifespan and experts suggest that 100-200mm platforms will remain as a workhorse well into the 2030's. As tools and industry mature, EO Technical continues to grow as a cost-effective and reliable source for re-manufactured parts, in addition to providing equipment, service and customized training classes.

TOOLING / UPGRADES



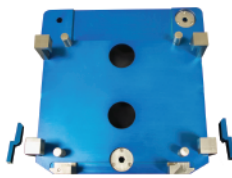
LVDT to TESA Cable



WS Adjustment Kit



OCU - LCD Upgrade Kit



Library Reference Tool

2018 YTD SUMMARY

- o 1500+ Parts Shipped
- o 9 Training Sessions Completed
- o 3 Tools Sales / 4 Full Install / Start-up's
- o 40 Service Calls Worldwide

WHAT'S NEW!

Highlights

- o New Rebuild Lab For: TCU, Airco, High Voltage Power Items
 - o The established team from EO Technical RF has transitioned into EO Technical LLC and they will now focus exclusively on ASML parts.
- o New Barcoding System
 - o To improve efficiency and tracking capabilities, EOTS is implementing a new barcoding system. A small barcode label will be affixed to all EOTS parts as of November 2018.

New Hires

- o **Rich Fruscella**- Rich is a new FSE / Trainer with 23 years experience at ASML. He began his career as a Customer Support Engineer I-III, he then advanced into positions including Fields Support Engineer, Field Applications, Group Leader and CSE Service Manager.
- o **Randy Fullman**- Randy joined EOTS RF after a lifetime of electronics repair experience including 18 years working as a technician at Intel then LAM. He is also HVAC Certified.
- o **Ron Stutzman** - Ron is also a wealth of knowledge, beginning his career in the Navy, completing his masters study at UC Davis & holding positions at Teledyne & Wah Chang before EOTS RF.
- o **Steven Knepprath** - Steven has also transitioned from EOTS RF to assist with a variety of activities to improve logistics and purchasing.

FEATURED PARTS

For Sale - No Exchange Required

- | | |
|-----------------------------|------------------------------|
| o WG-UV-2 Block Filter | o C3 & C6 Calibration Wafers |
| o Interference Filter | o Green Laser Power Supply |
| o Reticle Placed Bad Sensor | o WTS Covers |
| o RET. In EXCH. POS. Sensor | o First Mirror |
| o 1000W Shutter Motor | o Locking Disk Tooling Assy |
| o Ill. Shutter Assy II | o X-Motion Motors |
| o Reticles | |

Rebuilds / Exchanges

- o Improved rebuild for LS Laser Units
- o Primary Switcher +5V 60A
- o 1000W XYZ Manipulators
- o Z-Module Stepper ARMS

Upcoming

- o HP 5517 Laser's (Testing Now)
- o Y-Motion Motors
- o WTS Elevator Motors
- o Airco Controllers